

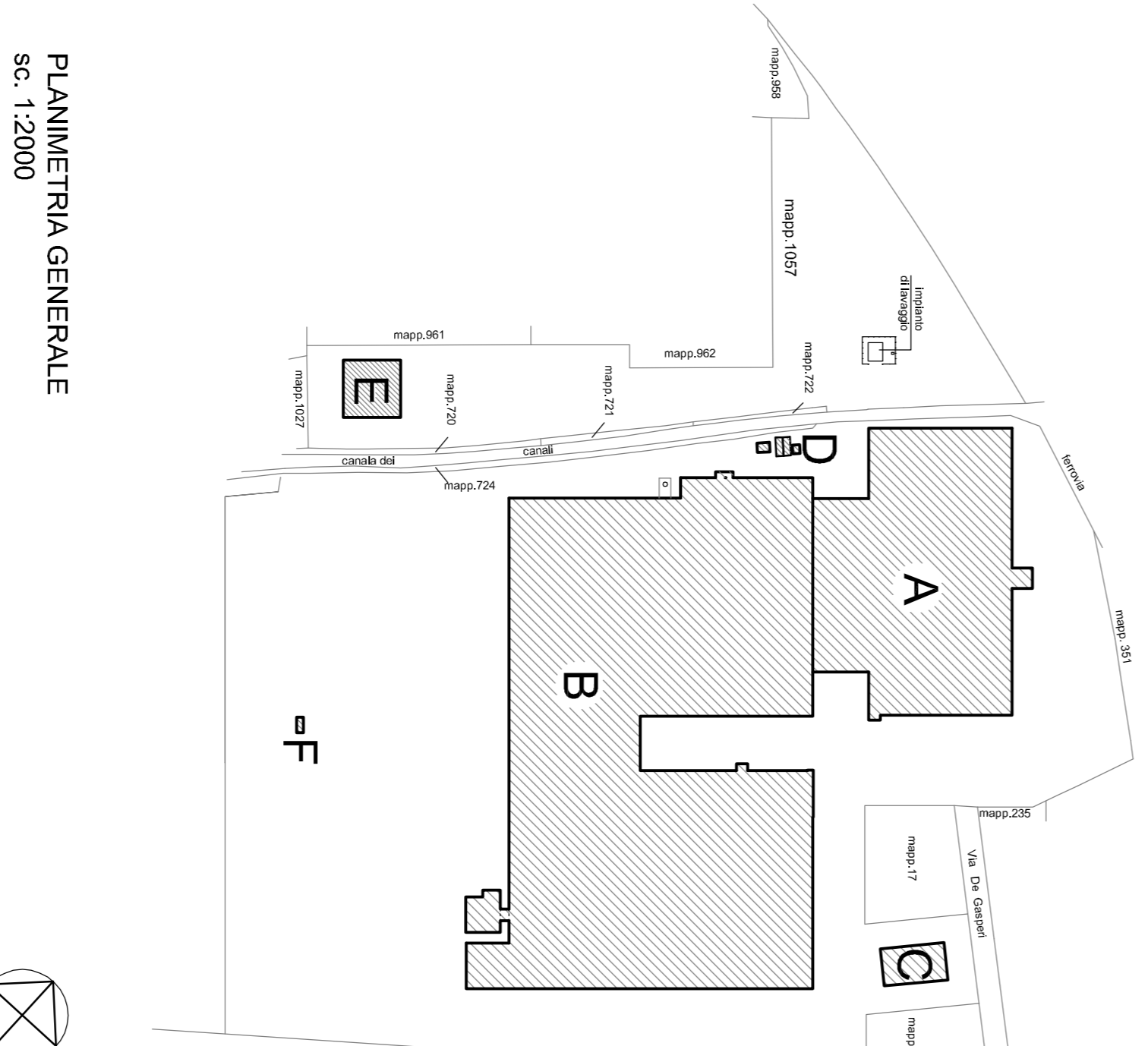
COMUNE DI RUSSI

Coperto  
PROGETTO PER AMPLIAMENTO DI STABILIMENTO DI PRODUZIONE  
MACCHINE AGRICOLE

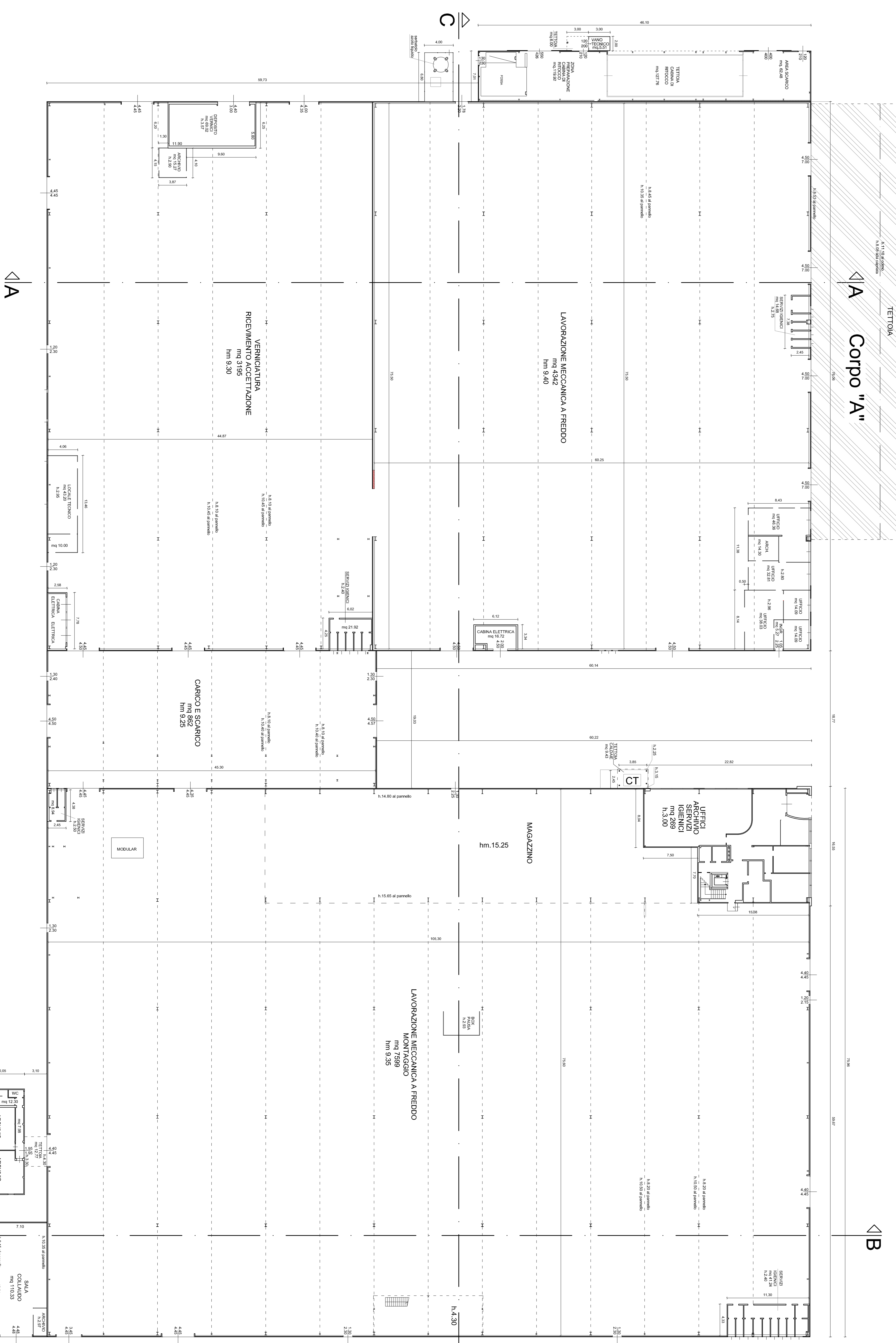
Urbanizzazione  
Via Alda De Gasperi n. 34  
Proprietà  
KERNELAND GROUP RAVENNA SRL  
C.F. 01055020897

Il Tecnico  
Arch. Massimo Cavalli

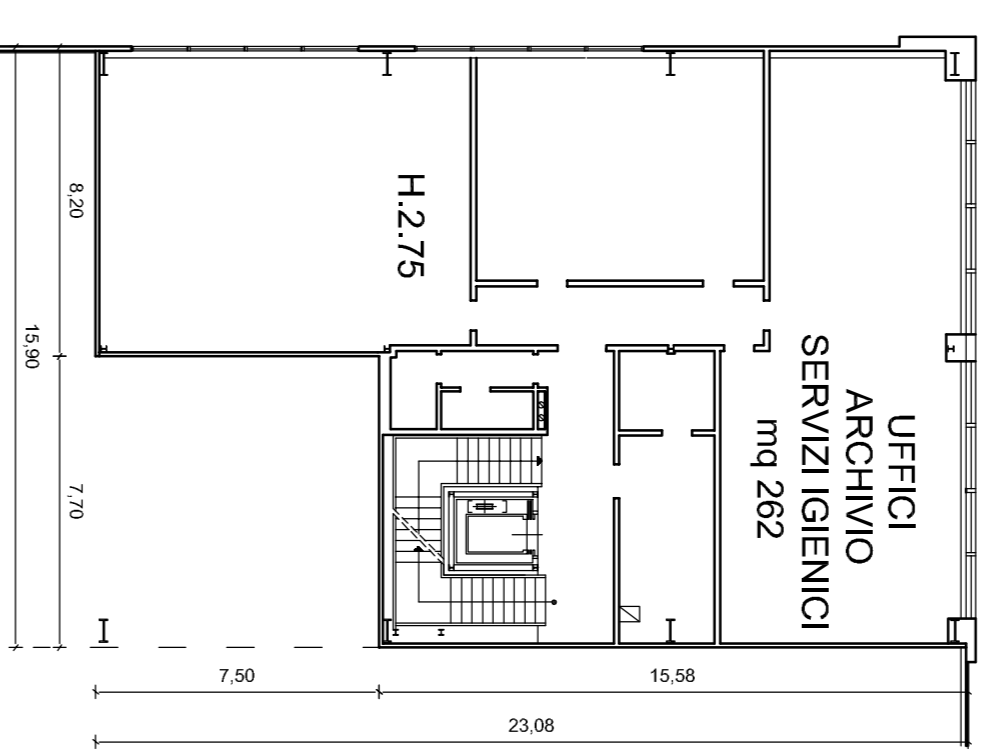
TAV. 3A - LEGGITTIMO  
PIANTA CORPO "B"  
Luglio 2023



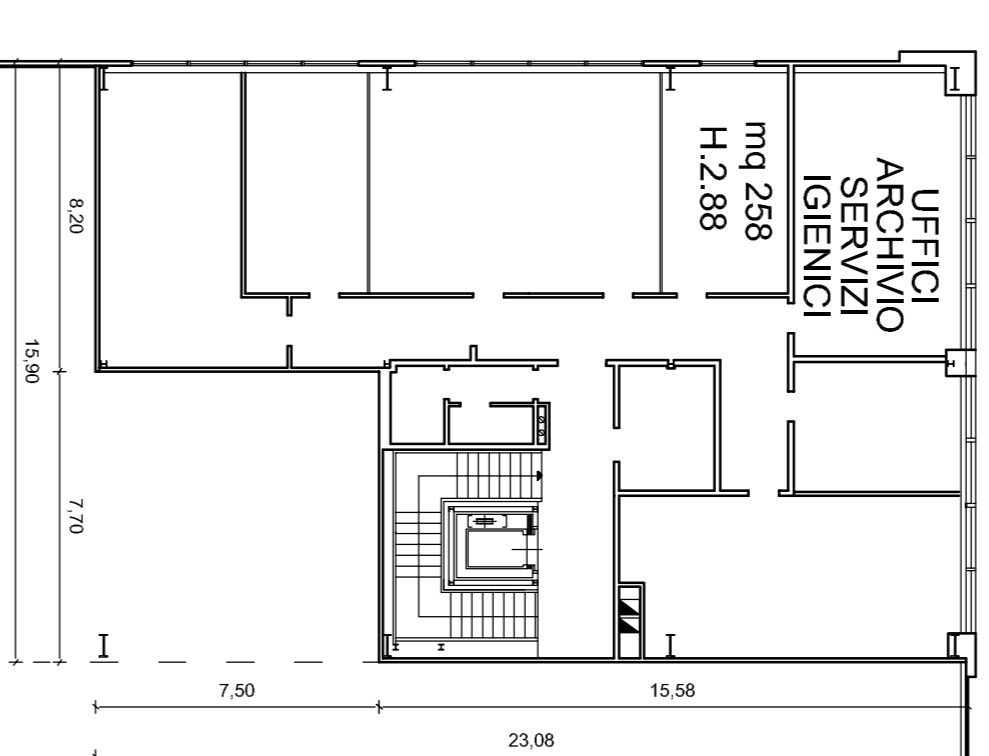
PIANIMETRIA GENERALE  
SC. 1:2000



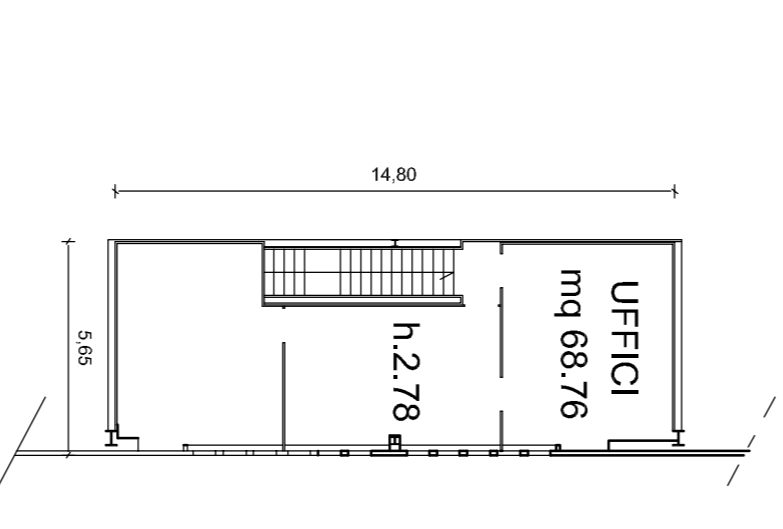
PIANO TERRA  
scala 1:200



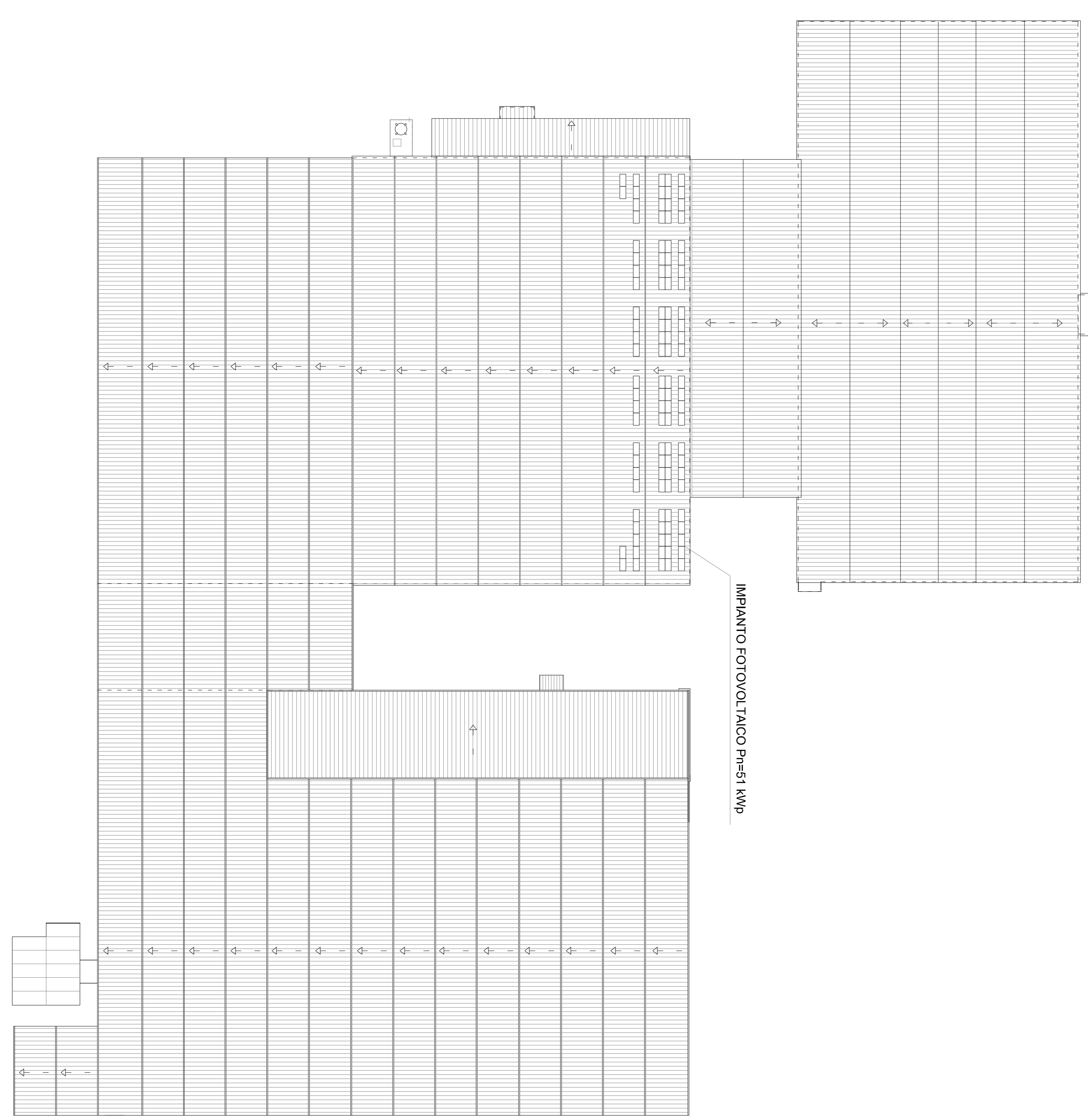
PIANO PRIMO  
"OFFICI"  
scala 1:200



PIANO SECONDO  
"OFFICI"  
scala 1:200



PIANO PRIMO  
scala 1:200



PIANTA COPERTURA  
scala 1:400